

## Gira data and communication connection technology

The right connection for any system – in the style of the switch range



03 Introduction

04 Areas of application

06 Product range

10 Installation

11 Connection types

12 Design variants

14 Additional products

16 Switch ranges

18 More about Gira

## Gira data and communication connection technology

The right connection for any system – in the style of the switch range

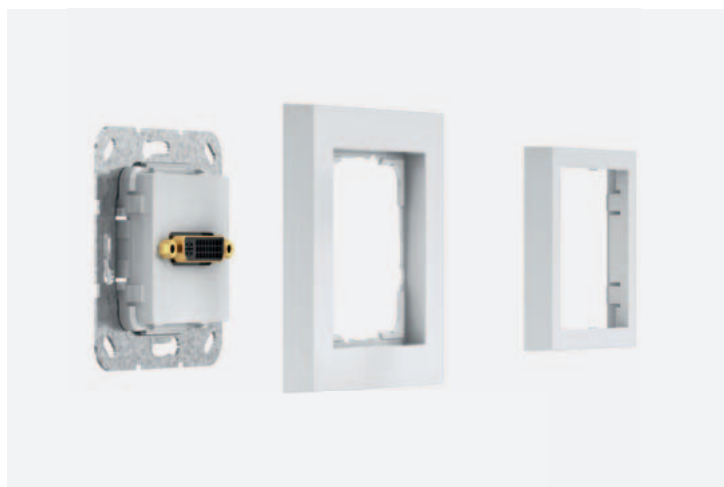
Home entertainment, media presentation, data transfer and much more: Gira data and communication connection technology provides digital and analogue interfaces for all common multimedia and network applications. Because of their integration in the Gira switch ranges, all connections can be installed to match the design of the entire electrical installation, both in private buildings and commercial properties.



### More than 70 components

The product range includes connections for HDMI, VGA, cinch audio, USB, RJ 45, SAT, loudspeaker cables and more. Both individual interfaces and combination inserts with a variety of connections are available. Many of the functions are available in three models for various

connection types: with solder termination, gender changer or breakout cable. In addition, there is an insert with a U-shaped bracket for attaching laptop security locks and a hinged cover.



### Simple installation

An installation system with plug-in principle ensures fast, safe, simple installation. Because of the separation of function and cover frames, the flush-mounted units can be installed first if desired. The desired design can then be selected during a later construction phase.



### In the style of the switch range

All interfaces are integrated in the Gira switch ranges. This means both unity of design for the entire electrical installation and a large degree of freedom in selecting colour and frame variants to match any interior.

## Diverse areas of application

### Possible applications of Gira data and communication connection technology

Gira data and communication connection technology offers flexible solutions for all applications, whether in a private residence, office, hotel, school, doctors' practice or laboratory. Due to the combination of various interfaces on a function insert, there is a suitable connection available for any application.

#### Perfectly connected entertainment systems



#### Suitable connections for all office technology



Optimum audio transmission for hi-fi systems



High-quality solutions for conference rooms





## Gira data and communication connection technology

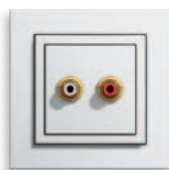
### Product range

The product range of Gira data and communication connection technology comprises more than 70 components for networking a variety of systems. In addition to inserts with individual interfaces, numerous combinations are available with different connections in one device. Nearly all audio and video components are furnished with high-quality gold plating, which ensures the optimum transmission quality of image and sound.

#### Audio

Whether hi-fi systems or compact systems: with the audio connections of Gira data and communication connection technology, all sound systems can be perfectly connected. Connections for cinch, mini jacks, XLR, WBT nextgen, BNC and loudspeaker cables are available.

Cinch audio

Cinch audio + mini jack  
3.5 mmHDMI™ high-speed with  
ethernet + cinch audioUSB 3.0 type A + cinch  
audio

DVI + cinch audio



VGA + cinch audio



Mini jack 3.5 mm

HDMI™ high-speed with  
ethernet + USB 3.0 type  
A + mini jack 3.5 mmUSB 3.0 type A + mini jack  
3.5 mm

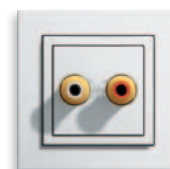
VGA + mini jack 3.5 mm



WBT – 0708 Cu nextgen™



WBT – 0710 Cu nextgen™

Cinch audio + composite  
videoS-video + composite  
video + cinch audioS-video + composite  
video + cinch audio + mini  
jack 3.5 mmLoudspeaker connection  
box, 1-gangLoudspeaker connection  
box, 2-gangLoudspeaker connection  
box, 4-gang

2 x BNC



XLR pin jack D-series



Cinch audio (Keystone)



Shown in the Gira E2 switch range and pure white glossy finish.

















The complete product range of the Gira data and communication connection technology can be found in the current Gira catalogue or at [www.katalog.gira.de/en](http://www.katalog.gira.de/en)

Video

For networking DVD players, projectors and other video components: Gira data and communication connection technology offers diverse video interfaces such as S-video, composite video and component video as well as combinations with cinch audio or mini jack.

TV and entertainment

For full-HD television, game consoles, Blu-Ray players and more: the connection boxes for HDMI and SAT F cables are available in a variety of combinations, e.g. with a USB connection, cinch pin jack or RJ 45 network connection.

S-video + composite video	Component video	Cinch audio + composite video	HDMI <sup>TM</sup> high-speed with ethernet	2 x HDMI <sup>TM</sup> high-speed with ethernet	HDMI <sup>TM</sup> high-speed with ethernet + USB 3.0 type A
					
S-video + composite video + cinch audio	S-video + composite video + cinch audio + mini jack 3.5 mm		HDMI <sup>TM</sup> high-speed with ethernet + cinch audio	HDMI <sup>TM</sup> high-speed with ethernet + USB 3.0 type A + mini jack 3.5 mm	HDMI <sup>TM</sup> high-speed with ethernet + VGA
					
			SAT F pin jack	HDMI + SAT F pin jack	Modular jack RJ 45 cat. 6A + SAT F pin jack
					
			2 x SAT F pin jack (Keystone)	2 x SAT F pin jack	
					

# Gira data and communication connection technology




## Product range

**Graphics**

Whether for flat screens or tube monitors: the DVI and VGA graphic interfaces of Gira data and communication connection technology bring video signals directly out of the wall and onto the screen. Device variants with a cinch connection, mini jack or USB interface are available options.

**Network**

The RJ 45 connection box is indispensable for any company network and also the reliable solution for Internet access for home use. In addition to a space-saving 4-gang combination, 1-gang and 2-gang variants with a 30° angled socket outlet and inscription space are available.

VGA	2 x VGA	VGA + cinch audio	Modular jack RJ 45 cat. 6A	4 x modular jack RJ 45 cat. 6A	Modular jack RJ 45 cat. 6A + SAT F pin jack
					
VGA + mini jack 3.5 mm	HDMI™ high-speed with ethernet + VGA	USB 3.0 type A + VGA	Cover plate for network connection box, 1-gang	Cover plate with inscription space for network connection box, 1-gang	Cover plate for network connection box, 2-gang
					
DVI	DVI + cinch audio		Cover plate with inscription space for network connection box, 2-gang	Cover plate with inscription space for modular jack RJ 45 cat. 6A, 2-gang	
					



Data transfer

For data transfer directly through the wall: the Gira data and communication connection technology product range offers USB connections and Sub D pin jacks in 9-pole and 15-pole variants.

Accessories

To protect technology in publicly accessible areas, an insert is available with a U-shaped bracket for fastening laptop security locks. A hinged cover is also available, e.g. for connections which are rarely needed or connections which shouldn't be directly visible.

USB 3.0 type A



2 x USB 3.0 type A



HDMI™ high-speed with  
ethernet + USB 3.0 type A



Insert for fastening laptop  
security locks



VGA + cinch audio with  
hinged cover



USB 3.0 type A + cinch  
audio



USB 3.0 type A + mini jack  
3.5 mm



USB 3.0 type A + VGA



Sub D 9-pole



Sub D 15-pole



2 x USB 3.0 type A  
(Keystone)



## Simple installation

### Installation system with plug-in principle

An installation system with plug-in principle ensures fast, safe, simple installation. Because of the separation of function and cover frames, the flush-mounted units can be installed first if desired. The desired design can then be selected during a later construction phase. Removal, e.g. for renovations, is also made much easier using this system. Many functions are delivered with removable synthetic cover plates to protect connections from dust and dirt.

Fig: The installation system of Gira data and communication connection technology



1.  
After wiring with the cables in the wall, the function insert is screwed into the flush-mounted box.

2.  
Finally, the cover frame from the desired switch range is positioned over the function insert.

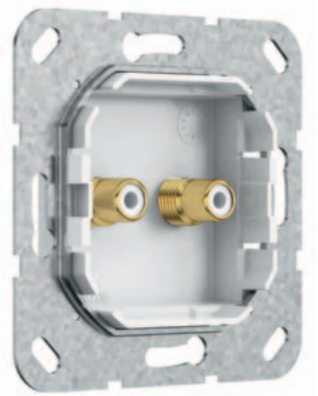
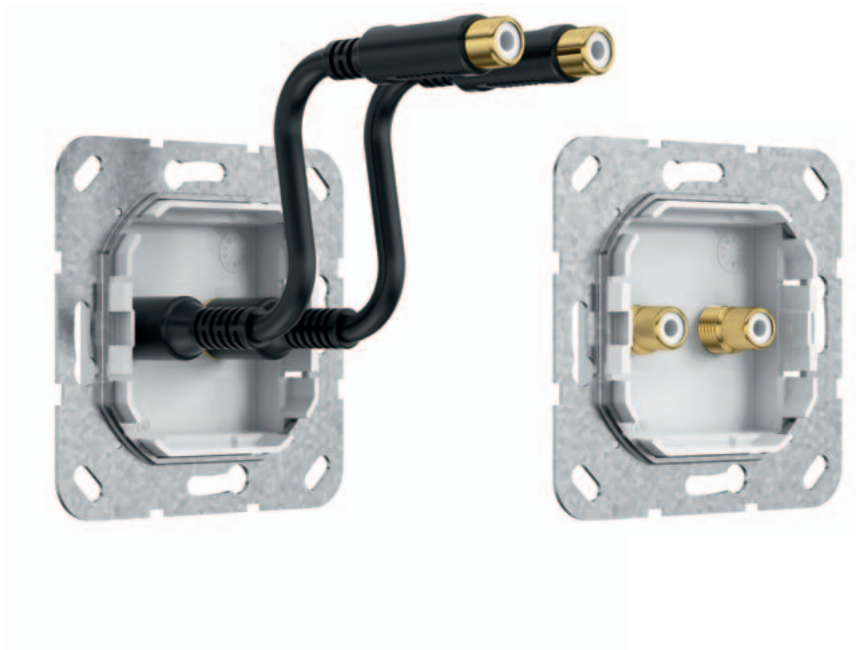
3.  
The mounting frame is installed to secure the design frame. A stable insertion mechanism ensures firm positioning.

## Three connection types

### Solder termination, breakout cable and gender changer

Selected interfaces are available in three models for various connection types: with solder termination, breakout cable or gender changer. In this way, both ready-to-connect or self-made cables can be used. For example, this is a particular advantage for difficult installation conditions or when the required plug connectors do not fit through the existing empty pipes.

Fig: The connection types of Gira data and communication connection technology



#### Solder termination

The solder termination offers maximum flexibility in cable fabrication and does not require plug connectors.

#### Breakout cable

The breakout cable can be used e.g. to connect plug connectors which do not fit in the flush-mounted box due to their length.

#### Gender changer

Connections with gender changers are the standard solution for cabling in flush-mounted boxes.

## Design diversity

All functions in the style of the switch range

Classic white, exclusive colours and elegant materials such as glass, aluminium or walnut: all interfaces are integrated in the Gira switch ranges and are therefore available in diverse design variants. In this way, the functions of Gira data and communication connection technology can be installed to match any interior.

Fig: 2 x HDMI/USB 3.0 type A + cinch audio, switch/socket outlet "British Standard" can be switched off, Gira E2, pure white glossy



Fig: 2 x HDMI/USB 3.0 type A + cinch audio, switch/socket outlet "British Standard" can be switched off, Gira Event Clear, green/pure white glossy



Fig: 2 x HDMI/USB 3.0 type A + cinch audio, switch/socket outlet "British Standard" can be switched off, Gira E22 Aluminium



Fig: 2 x HDMI/USB 3.0 type A + cinch audio, switch/socket outlet "British Standard" can be switched off, Gira Esprit, walnut-aluminium/cream white glossy

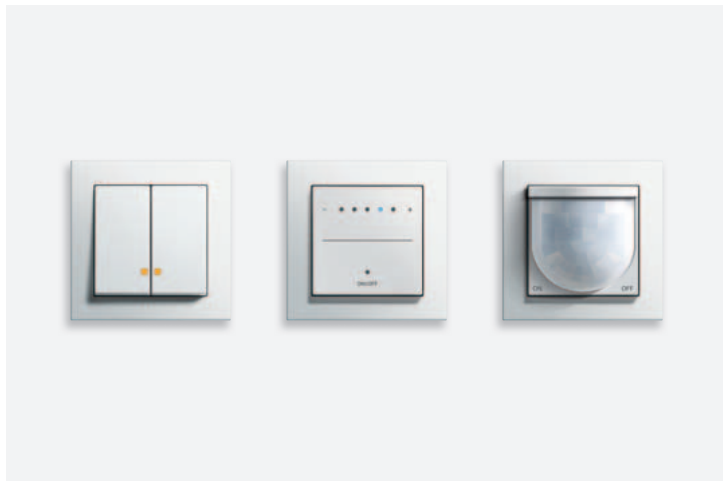


## Intelligent building technology from Gira

### Innovative products, systems and solutions

As a provider of intelligent building technology, Gira features a wide range of products and solutions which provide more convenience, security and value in buildings. All systems are integrated in the Gira switch ranges and set standards both in technology and design.

Illustration (from left to right): Series control switch, Touchdimmer, automatic control switch 2



#### Light control

Diverse products are available for switching and dimming lights: dimmers, push switches, rocker switches, and pull-cord switches in different variants and solutions for automatic and need-based light control.

Illustration (from left to right): Blind control button, key switch, electronic blind controller easy



#### Blind control

The various solutions for electronic blind control ensure more convenience in the home. Blinds, shutters or awnings can be controlled fully automatically. Of course, manual operation is always possible as an alternative.

Illustration (from left to right): Room temperature controller, continuous controller, ambient air sensor CO<sub>2</sub>



#### Air conditioning/heating control

An ideal room climate can be achieved or maintained with the Gira products for air conditioning and heating control. The product range includes room temperature controllers, continuous controllers and ambient air sensors to measure CO<sub>2</sub> concentration in the air, among other products.

Illustration (from left to right): Gira RDS flush-mounted radio, Gira control unit M217/M218 for the Revox multiroom system



#### Music control

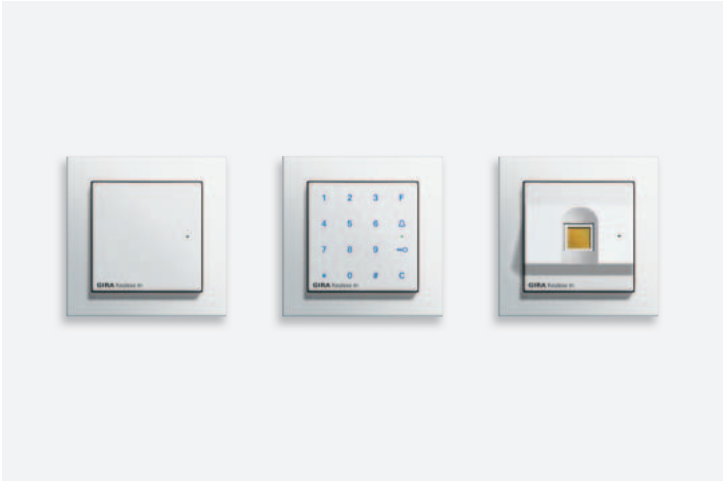
The Gira RDS flush-mounted radio simply sits in the wall – just like light switches and socket outlets. In addition, with the operating units for the Revox multiroom system, Gira also offers a high-quality system solution for music control in the entire home.



Fig: Gira surface-mounted home station video



Illustration (from left to right): Keyless In Transponder reader, Keyless In Keypad, Keyless In Fingerprint reader



Door communication system

The Gira door communication system provides solutions for all indoor and outdoor requirements. Door intercoms to match the Gira switch ranges, video function, flexible operating options by integrating to IP networks, and much more.

Keyless In

The Gira Keyless In system enables secure access control without keys, using transponders, entering a numeric code or recognising fingerprints, users can conveniently enter rooms and buildings.

Illustration (from left to right): Push button sensor3 Plus, 5-gang, push button sensor3 Comfort, 3-gang, push button sensor3 Basic, 1-gang



Fig: Gira Control 19 Client



Gira KNX system

The system for intelligent building technology: KNX. The flexible bus technology enables the automation and central control of the entire electrical installation in the building – which not only offers more convenience and safety, but also saves energy.

Gira HomeServer

The Gira HomeServer is the on-board computer for the intelligent house. It controls all the functions of the KNX installation and integrates numerous other technologies seamlessly in the building control. Operation is simple and intuitive via the Gira Control Clients, per smartphones or tablets or on the computer.

## Gira switch ranges

Award-winning design is our programme

All the functions of Gira data and communication connection technology can be integrated in the award-winning Gira System 55, Gira E 22 and Gira F100 switch ranges. The frame variants are available in a wide range of colours and materials to match any interior design style.

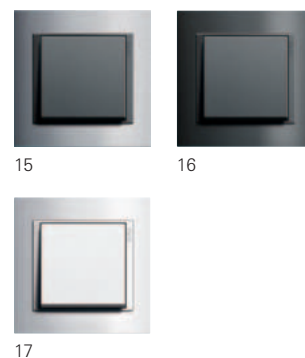
### Gira Esprit

- 01  
Aluminium black/  
colour aluminium
- 02  
Aluminium brown/  
cream white glossy
- 03  
Walnut-aluminium/  
colour aluminium
- 04  
Brass/pure white glossy
- 05  
Aluminium/anthracite
- 06  
Chrome/anthracite
- 07  
Glass black/  
colour aluminium
- 08  
Glass mint/  
colour aluminium
- 09  
Glass white/  
pure white glossy
- 10  
Glass umber/  
cream white glossy
- 11  
Glass C black/  
colour aluminium
- 12  
Glass C mint/  
colour aluminium
- 13  
Glass C white/  
pure white glossy
- 14  
Glass C umber/  
cream white glossy



### Gira Event

- 15  
Colour aluminium/  
anthracite
- 16  
Anthracite/anthracite
- 17  
Pure white glossy/  
pure white glossy



### Gira Event Clear

- 18  
Green/  
pure white glossy
- 19  
White/  
pure white glossy
- 20  
Black/  
pure white glossy
- 21  
Sand/anthracite
- 22  
Brown/  
cream white glossy
- 23  
Aubergine/  
colour aluminium



### Gira ClassiX

- 24  
ClassiX brass-  
black/brass
- 25  
ClassiX Art bronze-  
cream white/bronze



### Gira Event Opaque

26  
Mint/  
pure white glossy



26

27  
Blue/  
pure white glossy



27

28  
Red/  
pure white glossy



28

29  
Orange/  
pure white glossy



29

30  
White/  
colour aluminium



30

31  
Amber/  
colour aluminium



31

32  
Brown/  
anthracite



32

### Gira E2

33  
Anthracite



33

34  
Colour aluminium



34

35  
Pure white glossy



35

### Gira Standard 55

36  
Pure white matt



36

37  
Pure white glossy



37

38  
Cream white glossy



38

### Gira E22

39  
Stainless Steel



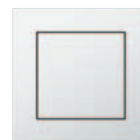
39

40  
Aluminium



40

41  
Thermoplastic  
(pure white glossy)



41

### Gira F100

42  
Pure white glossy/  
pure white glossy



42

43  
Cream white glossy/  
cream white glossy



43

44  
Colour platinum/  
pure white glossy



44

45  
Colour chrome/  
pure white glossy



45

46  
Brass/  
cream white glossy



46

More about Gira: Additional information about Gira and the Gira products can be found at [www.gira.com](http://www.gira.com). Additional brochures can also be requested from the Gira Information Ordering Service. +49(0)21 95-602-128, Fax +49(0)21 95-602-119, [info@gira.com](mailto:info@gira.com)



[www.gira.com](http://www.gira.com)

The Gira website provides you with information on the company and the entire Gira product range. The Gira products are presented with illustrations, a brief description, function and design examples, and detailed technical specifications. Our extensive download area offers brochures, manuals, operating instructions, and further information you may require.



### Intelligent building technology from Gira

The brochure shows the entire Gira product range and also provides basic information on each product.  
Order No. 18601 90

Gira data and communication  
connection technology

Distributor  
Gira Giersiepen GmbH & Co. KG

Concept, design, editing  
schmitz  
Visuelle Kommunikation,  
[www.hgschmitz.de](http://www.hgschmitz.de)

Product photography  
Dirk Hoffmann, Jüchen  
Udo Kowalski, Wuppertal  
Henrik Spohler, Hamburg

Lithography  
vimago – Die Medien-Experten.  
Krefeld

Printing  
Ley + Wiegandt, Wuppertal

Subject to technical  
modifications.

Possible colour variations between  
images in this product information and  
specific products are due to printing  
processes and cannot be avoided.

# GIRA

Gira  
Giersiepen GmbH & Co. KG  
Electrical installation systems

Industriegebiet Mermbach  
Dahlienstraße  
42477 Radevormwald

P.O. Box 1220  
42461 Radevormwald

Germany

Phone +49(0)21 95-602-0  
Fax +49(0)21 95-602-119

[www.gira.com](http://www.gira.com)  
[info@gira.com](mailto:info@gira.com)