

## Gira logic module

With the Gira logic module, single-family houses and properties of similar sizes featuring a KNX system can be easily equipped with a series of automated comfort functions.

## Gira logic module

Simple convenience and easy parameterisation



Gira logic module

### **Gira logic module**

It can be used for switching lights in a time-delayed sequence, calling up certain light scenes directly using a push button sensor, controlling room temperature, or setting other logical functions. With the Gira logic module, single-family houses and properties of similar sizes featuring a KNX system can be easily equipped with a series of automated comfort functions. Using the intuitive Gira Project Assistant allows projects to be parameterised conveniently in just a few steps and easily adapted at any time per drag & drop. A convenient assistant guides the programmer to the desired effect. Thanks to the simulation, parameterisation errors can be nearly ruled out, while the duration of commissioning is shortened significantly.

### **Range of functions thanks to module library**

A library with many powerful logic modules is available in the logic editor. This library contains parameters and initialisation values/constants which can be utilised to customise the automation logic. An input, logic module, and output are combined easily at the click of a mouse to create the individual automation logic. Suitable connections are highlighted in colour, in addition to unassigned inputs/outputs. An enlarged view of individual elements is possible using zoom. Error messages are bundled and recorded. Double clicking on an error prompt forwards you directly to the source.

### **Automatically finding the Gira logic module in the network**

The Gira Project Assistant automatically displays all devices available online. Searching for them by the IP address is not necessary.

### **Convenient logic sheet management**

Logic sheets can be moved across projects, renamed if necessary, and provided with keywords.

### **Tracking changes and undoing them if necessary**

All changes can be viewed and undone with the undo/redo function. Any desired status of the project can be restored rather like returning in a time machine.

### **Automatic save**

Each action performed in the Gira Project Assistant is saved automatically. This ensures that no data is lost, and there is no unnecessary extra work.

### **Finding instead of searching**

Filters help to reach goals quickly. Logic sheets can be found using their category keywords and designations. Completely customised organisation is possible using your own personal keywords.

### **Simulating logics**

Prior to commissioning, thorough testing of the logic functions can be performed in the simulation. This saves valuable time during the actual commissioning. Values can be set and modified as desired, which allows functions to be tested for the desired behaviour.

### **Better overview with multi-screen operation**

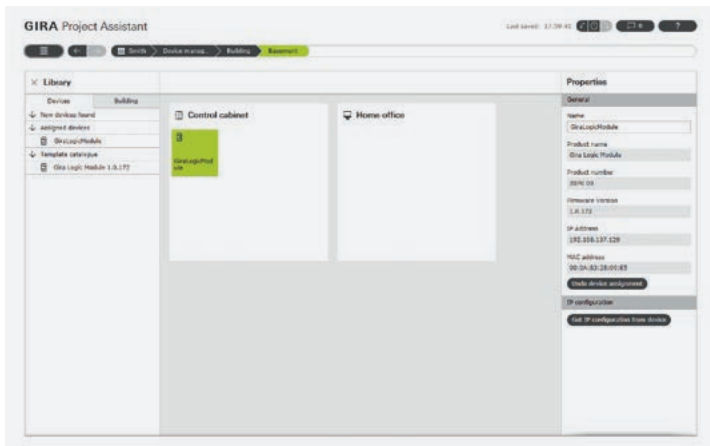
With the Gira Project Assistant, more than one project window can be opened at the same time. Working on a project on two screens simultaneously is possible in order to provide a better overview.

### **Integrated time clock**

Actions can also be linked to times when using a time clock.

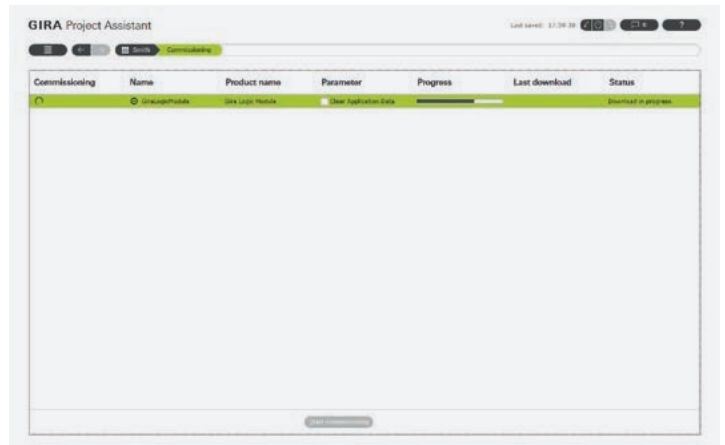
**Reach goals quickly: Clear structure of the Gira Project Assistant**

The Gira Project Assistant features a clear design, enables intuitive operation by drag & drop, and guides users through successful parameterisation in four steps – both online and offline.



1. Create the building structure. Locate device.

2. The group addresses imported from an ETS project are made into data points per drag & drop.



3. Realise and simulate the desired function.

4. Commissioning.

# GIRA

Gira  
Giersiepen GmbH & Co. KG  
Electrical installation  
systems

Industriegebiet Mermbach  
Dahlienstraße  
42477 Radevormwald

P.O. Box 1220  
42461 Radevormwald

Germany

Phone +49(0)21 95-602-0  
Fax +49(0)21 95-602-119

[www.gira.com](http://www.gira.com)  
[info@gira.com](mailto:info@gira.com)

Follow the Gira community  
on Facebook, Twitter, YouTube  
or Google+. For more  
information, please visit:  
[www.gira.de/socialmedia](http://www.gira.de/socialmedia)



## Installation

The Gira logic module is installed on a top-hat rail in the sub-distribution.

## Commissioning

The physical address and the application program are parameterised with the KNX commissioning software from Version: ETS 4.1.8. All other parameterisations are made with the Gira Project Assistant.

## Software

ETS (Engineering Tool Software)  
The Gira logic module product database of the KNX commissioning software ETS can be found in the download area at [www.gira.de](http://www.gira.de).

## Gira Project Assistant

Entire parameterisation and commissioning of the Gira logic module (e.g. IP address, scenes, and logic functions).

## Product range

Gira logic module  
Order No. 2070 00

Gira Project Assistant  
(available free of charge in the download area)

Subject to technical modifications.

Additional information are available in the Gira catalogue, in the Gira online catalogue at [www.catalogue.gira.com](http://www.catalogue.gira.com), and at [www.gira.com](http://www.gira.com)