

## Reloading interface design for the Expert software

For Windows 7 and Windows 10

When using the Gira Control 9 Client 2 with the Gira Expert software of the HomeServer, the display (resolution) of the Expert software must be adapted to the new Gira Control 9 Client 2.

Proceed as follows:

- The ZIP file "D1024x600V" must be unpacked on the configuration computer (the computer on which the Expert software is installed).
- The unpacked ZIP folder "D1024x600V" contains 4 subfolders with the interface design for the Gira Control 9 Client 2 in four languages.

In the example, German is selected and reloaded.

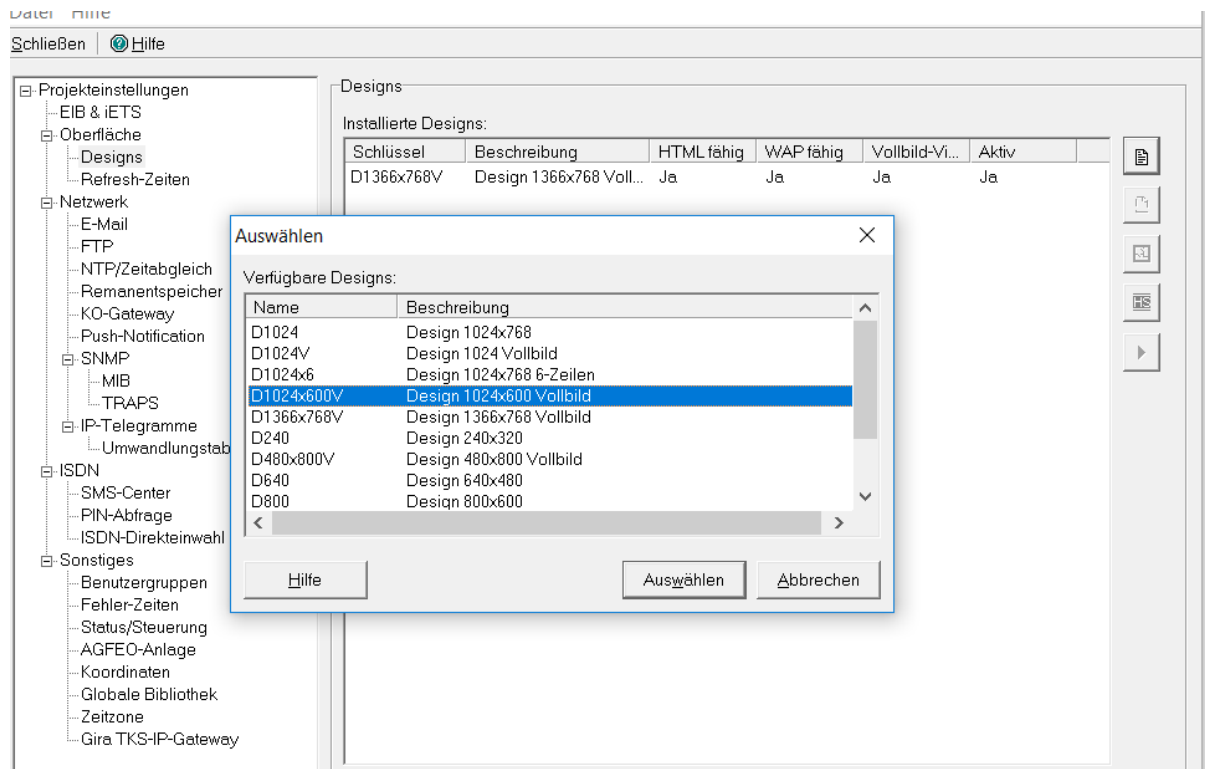
- Copy the folder "D1024x600V" from the unpacked subfolder "de".
- On the configuration computer, change to the:

[C:\Program Files \(x86\)\Gira\HS+FS\HS+FS Experte 4.5\designs\de](C:\Program Files (x86)\Gira\HS+FS\HS+FS Experte 4.5\designs\de)

path and add the copied folder.

**Important: You need administrator rights for the following work steps!**

- Restart the Expert software on the configuration computer.
- After restarting the Expert software, display the configuration via the entry "Interface -> Designs", and check if the new design can be selected (see screenshot).

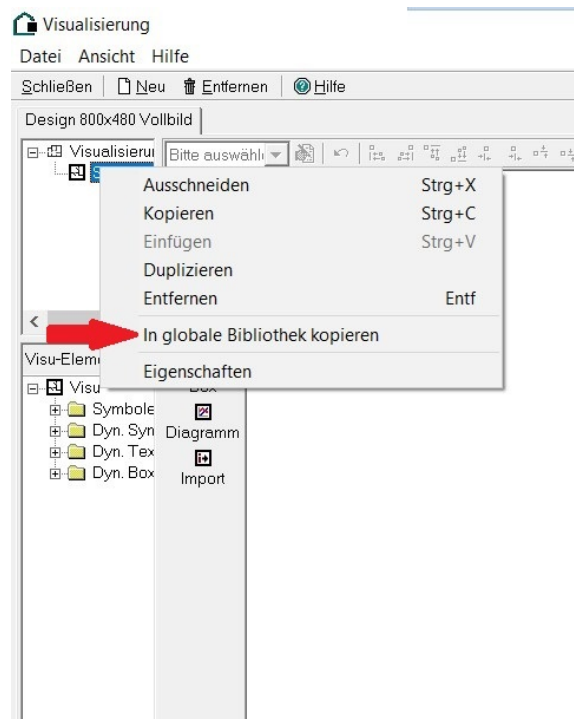


## Converting visualisation designs for Gira Control 9 Client 2

"Old designs" that have already been created can be used with the new Gira Control 9 Client 2.

Proceed as follows:

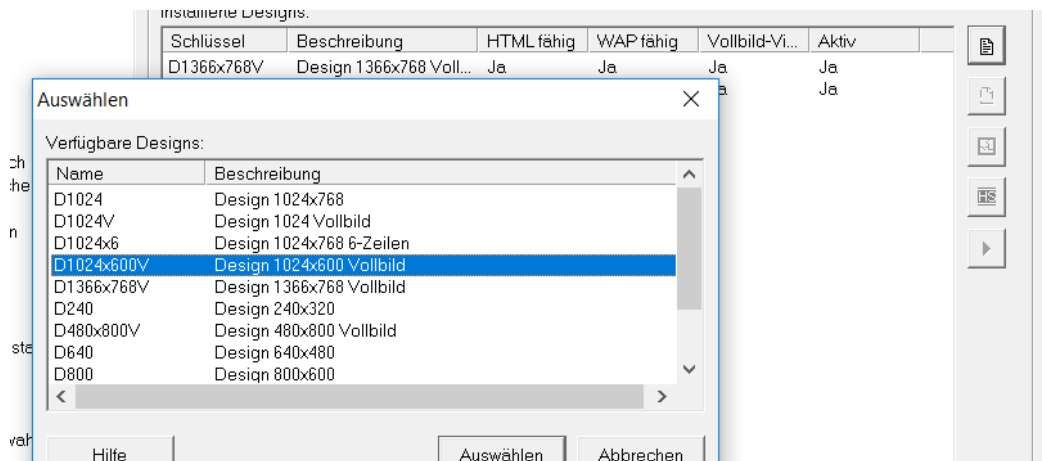
- Visualisation designs that were created in the the old design must be copied into a global library (see screenshot).



- Export global library

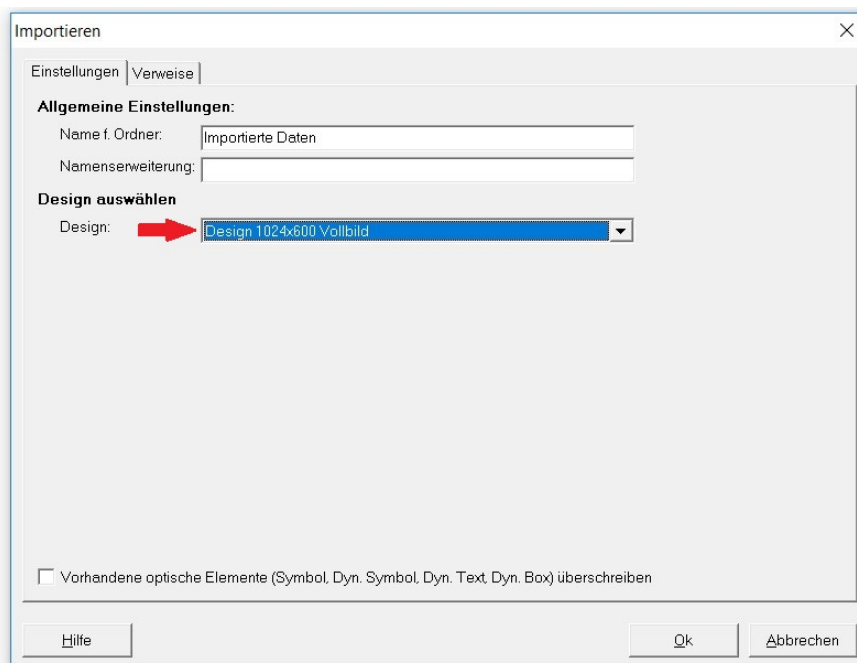


- Create new design



- Import global library

**Important: Select the new "Design 1024x600" when importing.**



- View imported pages

Under certain circumstances, symbols have to be adapted and moved because the resolution is different.

