

# GIRA

Smart Home.  
Smart Building.  
Smart Life.

[gira.com](http://gira.com)

Time for  
something  
new.



Gira / Modernisation

We are Gira.  
We are the ones with the switches.  
But we're so much more.

Future-oriented.  
Certified.  
Responsible.

We're the guardians, innovators,  
Smart Home pioneers, developers,  
systems thinkers, KNX partners,  
shapers of the future, patent masters,  
award winners and designers.

But above all, we're  
the ones who listen.  
To you.

Subtle, but smart.  
With distinct focus on quality,  
materials and functions.  
And the driving force of innovation.

In our hearts, we are engineers  
on a mission to inspire.  
With new technologies,  
smart applications and  
impressive attention to detail.

We will always work our hardest  
to find the best solution for you.  
With service, design and performance  
made in Germany.

Because that is what we stand for.  
And have been standing for since 1905.

---

04	_____	Introduction
06	_____	Design lines
10	_____	Smart living
22	_____	Operating elements
24	_____	System overview
26	_____	Sustainability
28	_____	Services
30	_____	Company

---





Have your children moved out? Has your favourite colour changed over the years? Are you looking for more convenience in your home?

These are all good reasons to think about upgrading your electrical systems and to better adapt your living space to your current needs. And if you buy an old house or apartment, you should think about the electrics, as electrical installations and moving parts such as switches can wear out over time.

Saving energy when heating, controlling light automatically in line with individual needs, living in a home that is modernised to suit your needs based on your age: with our intelligent solutions, you can control all functions in the conventional way with switches or set up a state-of-the-art Smart Home. Whatever you choose, modernisation should make living more pleasant and cosy – simply put, it should be more comfortable than before. You don't have to invest on a large scale as improvements in comfort and convenience can often be achieved with individual intelligent measures. For accessibility and quality of life even in old age.

---

⊕ Highlights, facts  
and benefits

---

A modern and smart electrical system increases the value of your house.

Choose the design line to match the interior design.

Enjoy more convenience, energy efficiency and security.

---

Modernisation / Design lines



Top: Gira E2  
Bottom: Gira F100  
Right: Gira E1





A newly redecorated room with fresh paint, new flooring and furniture looks modern and inviting, but old switches and frames often disturb the overall look. A modern design line brings small but distinctive features, perfectly rounding off the style.

Overview of Gira  
design lines.



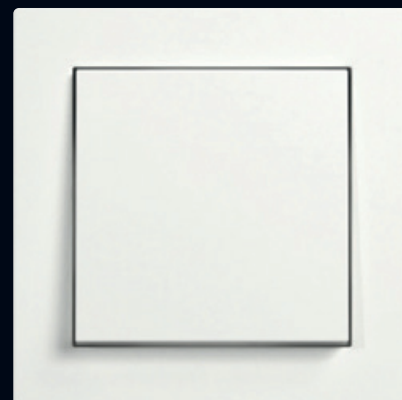
# Don't change your personality. Change your design.

It goes without saying that a redecoration will give your home a fresh new look: new colours, new furniture, everything perfectly coordinated. But then suddenly you notice something that does nothing for your new aesthetic: the old switches and frames. They do not match the modern ambience.

With the Gira System 55, you can solve this problem easily! Thanks to the innovative modular system, design frames can be replaced at any

time – tailored to your interior and style. Whether you're looking for fine glass, aluminium, stainless steel or the latest on-trend colours such as beige and brown – the choice is huge.

It's simple: insert, top unit, frame – one system, endless possibilities! Whether you want a modern look, country house style or a Scandinavian design, with Gira, your home will always remain stylish.



Gira E2



Gira E3



Gira Studio

Scan the QR code  
and learn more about  
Gira System 55 in  
the video.







# From functional area to living space.



In the past, kitchens were primarily functional work areas – practical but often without great comfort or cosy ambience. The set-up was designed to facilitate work processes without placing much emphasis on design and comfort.





Efficient charging  
directly from the wall.



Space-saving  
music control  
in the wall.



Design that adapts  
to kitchen style.

Nowadays, modern kitchens are integrated into the living environment with their open design and are increasingly becoming the focal point of a home.

Systematic  
design.



# From a wild mix of styles to a smart home.



Chrome, velvet, leather, cord and much more... in the 80s, almost nothing was out of bounds. But photo wallpapers and other fashions of the time left little space for design-oriented installation technology.



When it comes to automating functions in individual rooms, Gira has the right Smart Home solution for every requirement, combining living comfort, security and energy efficiency.



Energy-saving and intelligent lighting control.



Switchable socket outlets.



Smart control by voice or smartphone.



Shading controlled by timer and sun position.

Intuitively control your Smart Home.



# From a simple bathroom to an oasis of wellness.



In the past, the main focus of bathroom design was practicality. Colourful tiles and a simple arrangement of the plumbed fittings were the norm, with the primary aim of being functional and easy to maintain.

---



Yet today, a bathroom is no longer just a functional room, but a place to relax and enjoy yourself. Today's bathrooms combine technology with comfort, offering a relaxing wellness atmosphere right at home thanks to innovative systems.



Automatic light and dimming function for night time.



Climate control.



Automatic ventilation control with delay time.



Gira IP radio with worldwide reception directly from the wall.

Comfort in the  
Gira Smart Home.



# On. Off. Light. Dark.



In the 1980s, a digital alarm clock was the absolute must-have in every bedroom. Positioned next to the bedside lamp, it was a reliable and unmistakable workhorse of the bedroom.



Nowadays, you can wake up gently with your favourite music, automatically controlled shading or increasing levels of lighting. Smart lighting control not only makes your home more comfortable, but also saves electricity.



Retrofittable Bluetooth® wall transmitters next to the beds for flexible lighting control.



Dimmable lighting for a cosy ambience.



Wake up naturally to the sun and your favourite music.



Saving energy through combined shading and temperature control.

Saving energy in the Smart Home.



# Lighting on when needed.



We can all call to mind images of hallways with a coat rack, shoe cabinet, telephone table and a ceiling light offering only scant illumination, crossed at night on the way from bed to bathroom.



With automatic lighting, combined, for example, with motion detectors, you can move safely through your home even at night. By having lights come on only where you are, you can save energy while also increasing your comfort and safety.



Smoke alarm device for increased safety.



Presence simulation and integrated alarm function.



Presence detector for automatic light.



Socket outlets with integrated LED lighting.

Safety and security at home.



# From bell button to door station.

At one time, the bell was often the only level of connection between inside and outside.







Motion detector for burglary prevention.



See who is at the door when you're on the go.



Keyless access with KeylessIn products.

You want to use a state-of-the-art door communication system to see who you are talking to. With automatic outdoor lighting when it's dark to increase safety and comfort.

Safety and security at home.



# From traditional to smart operation.

Gira makes it easy to increase the comfort of your home through switches, touch, voice control or, thanks to the app, even when you're on the go.



Gira rocker switches – a true classic.

The classic switch allows for conventional switching via the rocker function. Gira offers an almost unlimited variety of design lines, materials, surface finishes, shapes and colours that are system-compatible and easy to replace.



Gira touch top unit – pure intuition.

With its intuitive touch surfaces, the touch top unit combines traditional on and off with a convenient dimming function. This allows lights and blinds to be activated and adjusted via touch points and swipe surfaces.



The smart Gira system can be controlled from anywhere using the Gira app – so you can always feel at home, even outside of your own four walls.



**Gira System 3000 Bluetooth®.**

The Gira System 3000 Bluetooth® enables the user to conveniently control light, shading and temperature via the app, without the need for additional central control units. The system is easy to retrofit, which means it can be seamlessly integrated into existing installations and thereby offers a flexible and user-friendly solution for greater convenience and energy efficiency.



**Pushbutton sensor 4.55 – Design that touches you.**

The pushbutton sensor 4.55 for Gira One and KNX does not just impress with its award-winning design, it also controls temperature, shading and lighting with a single touch. It is possible to select individual elements or to create entire well-being scenarios.



**Gira G1 – smarter multi-touch.**

The intelligent Gira G1 central operating unit, with its wide range of functions, lets you intuitively control lighting, shading, temperature and much more, including via a timer or automatically set times.



**Gira apps – Smart Home to go.**

The Gira Smart Home apps enable user-friendly control of lighting, shading, temperature and many other functions directly from a smartphone or tablet. They offer an intuitive operating surface, remote access and the option of creating individual scenarios and automation for greater convenience and energy efficiency.



**Smart Home voice control.**

Tell your home what to do – literally. To do this, you need Amazon Alexa or the Google Assistant and the Gira X1 server or Gira Home Server in the KNX Smart Home.

Experience innovations first-hand.



# Live a smart and flexible life. But with systems.

Gira offers a wide range of Smart Home systems that offer convenience, energy efficiency and flexibility. Whether simple solutions for lighting and shading control or comprehensive, networked systems, Gira has the right technology for every need.

Compatibility with third-party manufacturers

Scene control

Heating control

Shading control

Lighting control

Extendability

Door communication networking

Remote maintenance

Encrypted communication

Bluetooth® wireless

Wireless

KNX twisted pair bus line

Switch

Pushbutton sensor

Multi-touch display

Smartphone app

Voice control

Motion detector

Work required for retrofitting



First steps to a  
Smart Home

## System 3000

The Gira System 3000 offers end customers intelligent and flexible control of lighting, shading and temperature, which can be individually adjusted and thereby promotes energy efficiency. With simple operation via switches or the Gira app, it provides more convenience and control in everyday life.

Wireless  
Smart Home

## eNet

The Gira eNet Smart Home offers a wireless solution for intelligent control of lighting, shading and other functions, ideal for retrofits. It impresses through its simple app or voice control, as well as its flexible expandability and central networking of all components.

Simple  
Smart Home

## Gira One

Gira One offers a simple introduction to the world of the Smart Home with a pre-configured solution for lighting, shading and room climate control. Its stand-out features are its intuitive operation and high reliability as well as the option to improve convenience and energy efficiency in everyday life.

High-end  
Smart Home

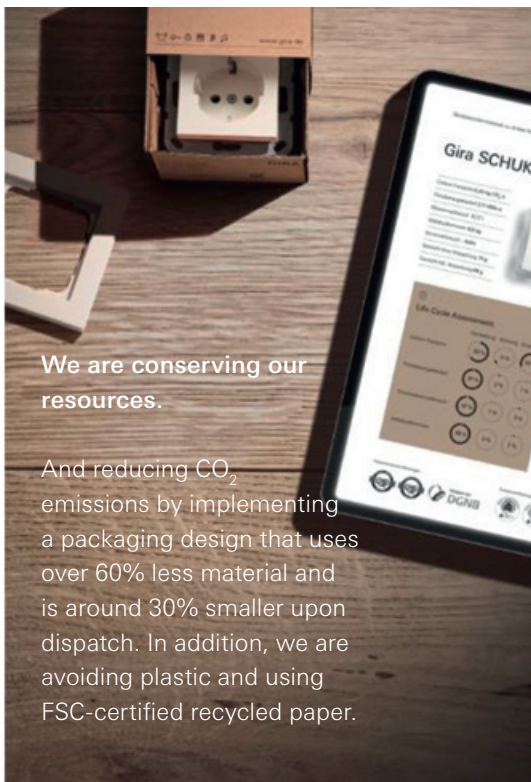
## KNX

The Gira KNX system offers end customers maximum flexibility and individuality in the control of an entire building. It boasts future-proof technology, comprehensive networking options and the option of implementing complex scenarios and automation for maximum convenience and energy efficiency.

	X		X
		X	X
X	X	X	X
X	X	X	X
X	X	X	X
	X	X	X
		X	X
		X	X
X			
	X		X
		X	X
X	X	X	X
	X	X	X
		X	X
X	X	X	X
	X	X	X
X	X	X	X
Low	Low	High	High

# Does long-term climate protection not need short-term goals?

We are doing our bit to achieve the 1.5°C target. We therefore continuously measure and reduce our CO<sub>2</sub> emissions. Our climate journey is an integral part of our corporate strategy.



We are conserving our resources.

And reducing CO<sub>2</sub> emissions by implementing a packaging design that uses over 60% less material and is around 30% smaller upon dispatch. In addition, we are avoiding plastic and using FSC-certified recycled paper.

Sustainable design lines.

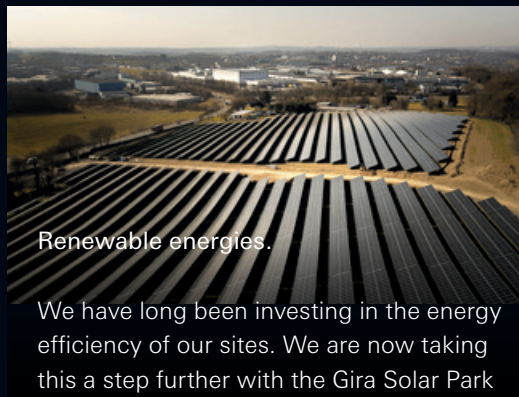
The use of natural materials generates approx. 75% less CO<sub>2</sub> emissions in the production of our Gira Esprit linoleum-plywood.<sup>1</sup>





Durable and environment-  
and climate-friendly.

Gira quality standards go above  
and beyond those established by  
certification standards. Our  
mechanical products are designed  
for a useful life of at least 20 years.  
The longer they are in use, the  
smaller their carbon footprint.



#### Renewable energies.

We have long been investing in the energy  
efficiency of our sites. We are now taking  
this a step further with the Gira Solar Park  
that is currently under construction. Once  
completed, it will generate 8.5 million kWh  
of electricity per year, enabling us to almost  
halve our direct electricity-related CO<sub>2</sub>  
emissions.<sup>2</sup>



Climate-friendly and  
healthy construction.

Selected Gira products have  
been tested by the Sentinel  
Haus Institut to ensure that  
they are free from harmful  
substances and emissions.  
The "QNG ready" and  
"Geprüft gesund" (confirmed  
healthy) labels help you on  
your way to sustainable  
building certification.

Find out more.



<sup>1</sup> Determined on the basis of a life cycle assessment  
pursuant to ISO 14040 and EN 15804, compared to a  
Gira E2 1-gang pure white glossy reference frame.

<sup>2</sup> Taking 2021 as the reference year.



# You are the focus of all of our efforts.

## Gira online magazine.

Gira's interactive design magazine provides ideas and inspiration on current trends in home design, smart technology, architecture, lighting and lifestyle. For inspiration, head to:

[www.gira.com/en/en/g-pulse-magazine](http://www.gira.com/en/en/g-pulse-magazine)

## References.

Discover our architectural references, which present a selection of forward-thinking, innovative, and smart projects. Be inspired by how Gira products complete the interior.

[gira.com/en/en/architecture-planning/references](http://gira.com/en/en/architecture-planning/references)

## Gira showrooms.

This is where the brand comes to life: you can see, touch and try out our products in a variety of Gira showrooms:

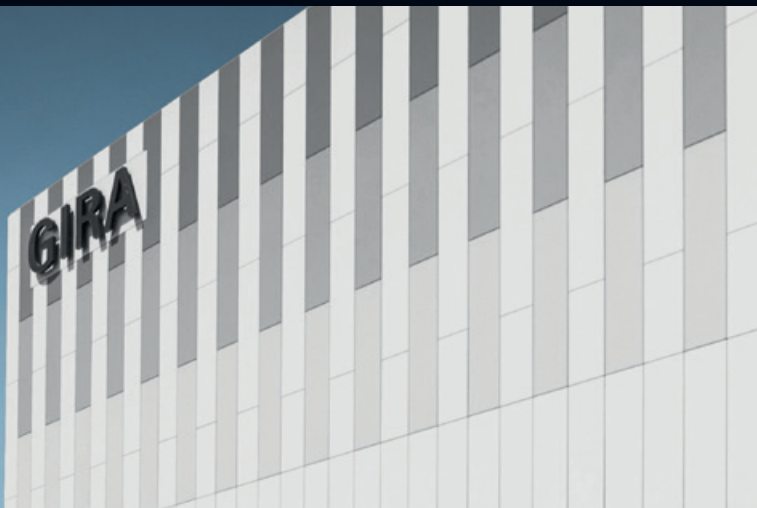
[partner.gira.com/en/service/bezugsquellen/showrooms.html](http://partner.gira.com/en/service/bezugsquellen/showrooms.html)





# Being innovative means thinking beyond your own four walls.

Since 1905, we have been the ones with the switches, but also so much more... because innovation is our great passion. Our pioneering spirit drives us to constantly improve and enhance the comfort of people's homes with innovative solutions.

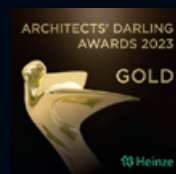


“Made by Diversity”.

Gira has been manufacturing at its site in Radevormwald for more than 100 years. The company is fully committed to the “Made in Germany” quality standard. This is what 1250 employees from 27 nations work for – each and every one of them with different talents, individual expertise, a wide range of experience and different life stories. This diversity – supported by common values – is the basis for our creativity, innovative strength and readiness for the future.

Innovative technology,  
award-winning design.

We have always aspired to combine maximum functionality and reliability in a unique design in order to create special user experiences. The extraordinary design quality and functionality of our products have been recognised by many internationally acclaimed awards.





Published by:  
Gira Giersiepen GmbH & Co. KG

Interface design:  
Images on pages 22 and 23  
schmitz Visuelle Kommunikation  
hgschmitz.de

Subject to technical modifications.

Any colour variations between the illustrations  
in this product information and the product  
are due to printing processes and cannot be  
avoided.

For us, helping to shape the future means  
taking sustainable business practices seriously  
in all areas of the company. This brochure is  
another way in which we are contributing  
to this by managing the resources we need  
responsibly and using environmentally  
compatible materials. For example, the paper  
grades used are FSC® certified and made of  
at least 60% recycled paper. And the printing  
is climate-neutral.

[www.sustainability.gira.com](http://www.sustainability.gira.com)



Initiatives and partnerships:



# GIRA

Gira  
Giersiepen GmbH & Co. KG

Dahlienstraße  
42477 Radevormwald

Postfach 12 20  
42461 Radevormwald  
Deutschland

Tel. +49 2195 602-0

[www.gira.com](http://www.gira.com)  
[info@gira.com](mailto:info@gira.com)

---

Best.-Nr. 19825 90 06/25 0.5 22